



1120 JAMES DR
HARTLAND, WI 53029-8310

Features

Owner occupied office building in the prestigious Bark River Commerce Center home to prominent health care clinics, national corporate headquarters, and major corporate subsidiaries owned by such companies as IBM. The building has been recently renovated and contains a national design and construction company available for tenant services.

Ample parking and professionally maintained green spaces. A pride in ownership is promoted daily by the building owners that also operate their businesses from this outstanding location. Landlord will provide a tenant improvement allotment or tenant improvements per negotiated terms. Just minutes away from Highway 16.

Zoning: B-4

Divisible: Yes

Park/Complex: Bark River Commerce Center

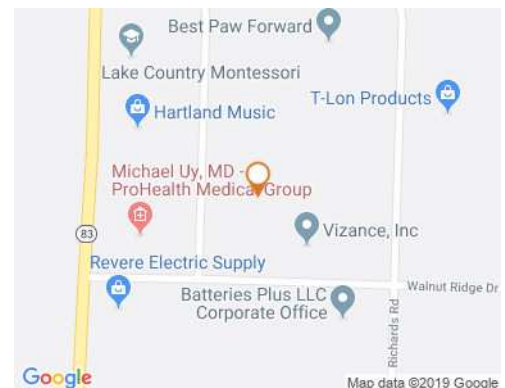
Year Built/Renovated: 1999/2016

Sewer: Municipal

Water: Municipal

Parking Spaces: 3 per 1,000 sf

Listing: 3894



Office For Lease

Available: 3,429 SF

Total Acres: 4.1

Min Contiguous SF: 1,306

Max Contiguous SF: 3,429

Class: B

Gross: \$16.50 PSF

Lori Hake, Vice President/Sales
Agent
262-695-8800
lhake@judsonrealestate.com

Judson & Associates, S.C.
2831 N. Grandview Blvd, Suite 222
Pewaukee, WI 53072



Lori Hake, Vice President/Sales
Agent
262-695-8800
lhake@judsonrealstate.com

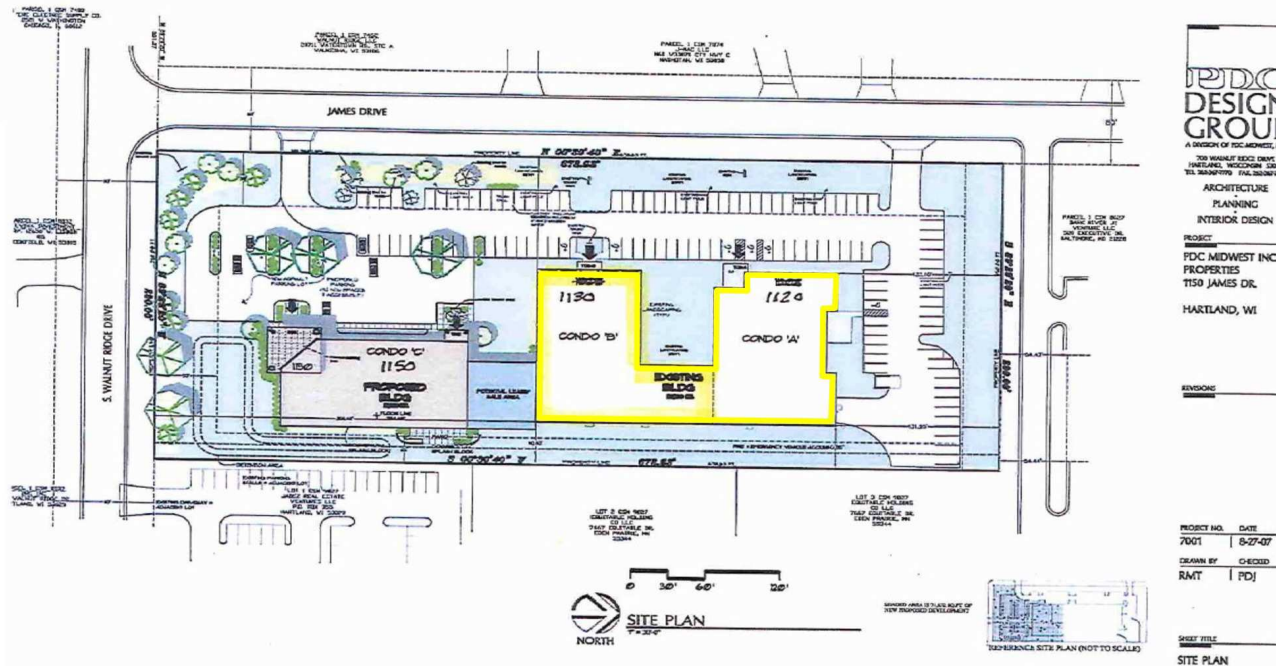
Judson & Associates, S.C.
2831 N. Grandview Blvd, Suite 222
Pewaukee, WI 53072



1120 James Drive	SF	LEASE RATE
UNIT 3	1,306 SF	\$1,796.00/Month Gross
UNIT 5	2,019 SF	\$2,776.00/Month Gross
UNIT 3&5 + Connecting Area	3,429 SF	\$4,715.00/Month Gross

Lori Hake, Vice President/Sales Agent
262-695-8800
lhake@judsonrealestate.com

Judson & Associates, S.C.
2831 N. Grandview Blvd, Suite 222
Pewaukee, WI 53072



Lori Hake, Vice President/Sales Agent
262-695-8800
lhake@judsonrealestate.com

Judson & Associates, S.C.
2831 N. Grandview Blvd, Suite 222
Pewaukee, WI 53072

1 Prior to negotiating on your behalf the Broker must provide you the following disclosure statement:

2 **BROKER DISCLOSURE TO CUSTOMERS**

3 You are a customer of the broker. The broker is either an agent of another party in the transaction or a subagent of another broker
4 who is the agent of another party in the transaction. The broker, or salesperson acting on behalf of the broker, may provide
5 brokerage services to you. Whenever the broker is providing brokerage services to you, the broker owes you, the customer, the
6 following duties:

7 ■ The duty to provide brokerage services to you fairly and honestly.

8 ■ The duty to exercise reasonable skill and care in providing brokerage services to you.

9 ■ The duty to provide you with accurate information about market conditions within a reasonable time if you request it, unless
10 disclosure of the information is prohibited by law.

11 ■ The duty to disclose to you in writing certain material adverse facts about a property, unless disclosure of the information is
12 prohibited by law (See Lines 47-55).

13 ■ The duty to protect your confidentiality. Unless the law requires it, the broker will not disclose your confidential information or the
14 confidential information of other parties (See Lines 22-39).

15 ■ The duty to safeguard trust funds and other property the broker holds.

16 ■ The duty, when negotiating, to present contract proposals in an objective and unbiased manner and disclose the advantages and
17 disadvantages of the proposals.

18 Please review this information carefully. A broker or salesperson can answer your questions about brokerage services, but if you
19 need legal advice, tax advice, or a professional home inspection, contact an attorney, tax advisor, or home inspector.

20 This disclosure is required by section 452.135 of the Wisconsin statutes and is for information only. It is a plain-language summary of
21 a broker's duties to a customer under section 452.133 (1) of the Wisconsin statutes.

22 **CONFIDENTIALITY NOTICE TO CUSTOMERS**

23 **BROKER WILL KEEP CONFIDENTIAL ANY INFORMATION GIVEN TO BROKER IN CONFIDENCE, OR ANY INFORMATION**
24 **OBTAINED BY BROKER THAT HE OR SHE KNOWS A REASONABLE PERSON WOULD WANT TO BE KEPT CONFIDENTIAL,**
25 **UNLESS THE INFORMATION MUST BE DISCLOSED BY LAW OR YOU AUTHORIZE THE BROKER TO DISCLOSE PARTICULAR**
26 **INFORMATION. A BROKER SHALL CONTINUE TO KEEP THE INFORMATION CONFIDENTIAL AFTER BROKER IS NO LONGER**
27 **PROVIDING BROKERAGE SERVICES TO YOU.**

28 **THE FOLLOWING INFORMATION IS REQUIRED TO BE DISCLOSED BY LAW:**

29 1. **MATERIAL ADVERSE FACTS, AS DEFINED IN SECTION 452.01 (5g) OF THE WISCONSIN STATUTES (SEE LINES 47-55),**

30 2. **ANY FACTS KNOWN BY THE BROKER THAT CONTRADICT ANY INFORMATION INCLUDED IN A WRITTEN INSPECTION**
31 **REPORT ON THE PROPERTY OR REAL ESTATE THAT IS THE SUBJECT OF THE TRANSACTION.**

32 **TO ENSURE THAT THE BROKER IS AWARE OF WHAT SPECIFIC INFORMATION YOU CONSIDER CONFIDENTIAL, YOU MAY LIST**
33 **THAT INFORMATION BELOW (SEE LINES 35-36). AT A LATER TIME, YOU MAY ALSO PROVIDE THE BROKER WITH OTHER**
34 **INFORMATION YOU CONSIDER TO BE CONFIDENTIAL.**

35 **CONFIDENTIAL INFORMATION:**

36 _____

37 **NONCONFIDENTIAL INFORMATION (The following information may be disclosed by Broker):**

38 _____

39 **(INSERT INFORMATION YOU AUTHORIZE THE BROKER TO DISCLOSE SUCH AS FINANCIAL QUALIFICATION INFORMATION.)**

40 **CONSENT TO TELEPHONE SOLICITATION**

41 **I/We agree that the Broker and any affiliated settlement service providers (for example, a mortgage company or title company) may**
42 **call our/my home or cell phone numbers regarding issues, goods and services related to the real estate transaction until I/We**
43 **withdraw this consent in writing. List Home/Cell Numbers:**

44 **SEX OFFENDER REGISTRY**

45 **Notice: You may obtain information about the sex offender registry and persons registered with the registry by contacting the**
46 **Wisconsin Department of Corrections on the Internet at: <http://offender.doc.state.wi.us/public/> or by phone at 877-234-0085.**

47 **DEFINITION OF MATERIAL ADVERSE FACTS**

48 **a "material adverse fact" is defined in Wis. Stat. § 452.01 (5g) as an adverse fact that a party indicates is of such significance, or that**
49 **is generally recognized by a competent licensee as being of such significance to a reasonable party, that it affects or would affect**
50 **the party's decision to enter into a contract or agreement concerning a transaction or affects or would affect the party's decision**
51 **about the terms of such a contract or agreement. An "adverse fact" is defined in Wis. Stat. § 452.01 (1e) as a condition or occurrence**
52 **that a competent licensee generally recognizes will significantly and adversely affect the value of the property, significantly reduce**
53 **the structural integrity of improvements to real estate, or present a significant health risk to occupants of the property; or information**
54 **that indicates that a party to a transaction is not able to or does not intend to met his or her obligations under a contract or**
55 **agreement made concerning the transaction.**

No representation is made as to the legal validity of any provision or the adequacy
of any provision in any specific transaction.

Copyright 2006 by Wisconsin REALTORS[®] Association
Drafted by Attorney Richard J. Staff

Judson & Associates SC
2831 N Grandview Blvd, Suite 222, Pewaukee WI 53072
Phone: (262) 695-8800
Fax: (262) 695-8801

NAIOP

COMMERCIAL REAL ESTATE
DEVELOPMENT ASSOCIATION
WISCONSIN CHAPTER