

WETLANDS LOCATION MAP

BEING A PART OF PARCEL DOUV159399809, LOCATED IN THE NE 1/4 OF SECTION 3, T.6N., R.17E., VILLAGE OF DOUSMAN, WAUKESHA COUNTY, WI.

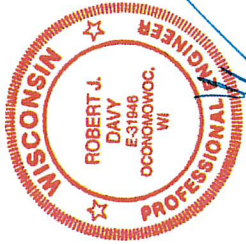
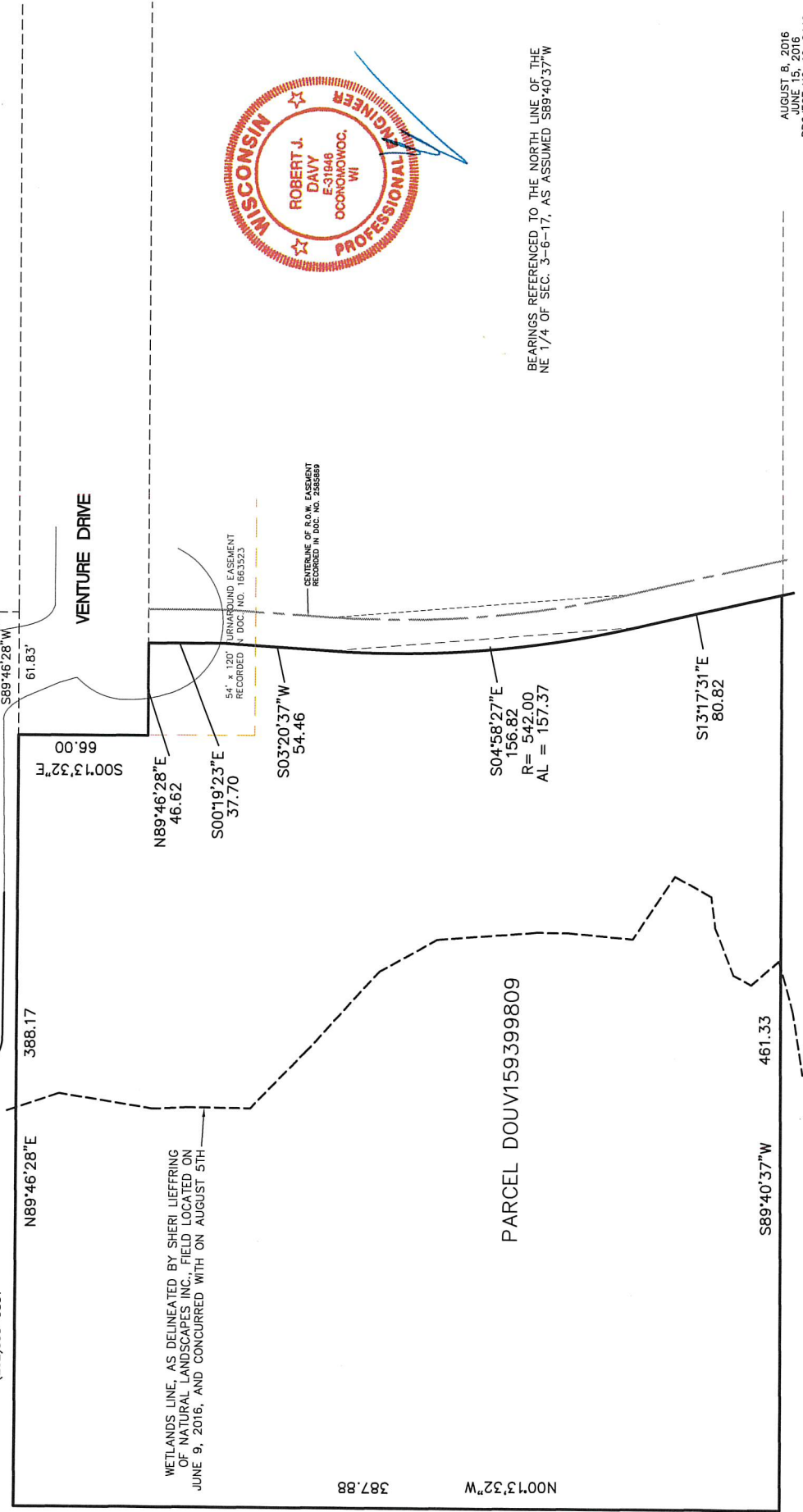
ENGINEER

ROBERT J. DAVY, PE E-31946
LAKE COUNTRY ENGINEERING, INC.
970 S. SILVER LAKE ST., SUITE 105
OCOONOWOC, WI 53066
(262)569-9331

LOCATION FOR

BP INVESTMENTS
38020 DELAFIELD ROAD
OCOONOWOC, WI 53066

590.745'
NORTH LINE OF NE 1/4, SECTION 3-6-17
S89°40'37"W
NE CORNER
SEC 3-6-17



BEARINGS REFERENCED TO THE NORTH LINE OF THE NE 1/4 OF SEC. 3-6-17, AS ASSUMED S89 40 37 W

AUGUST 8, 2016
DATE
AUGUST 8, 2016
PROJECT NO. 12-2449